



DashON Utility

User's Manual



©2015 RuggON Corporation. All rights reserved.

TRADEMARKS

RuggON logo is a trademark of RuggON Corporation, registered in the United States Patent and Trademark Office and in other countries. Microsoft and the Windows logo are either registered trademarks or trademarks of Microsoft Corporation in the United States and/or other countries. Microsoft products are licensed to OEMs by Microsoft Licensing, Inc., a wholly owned subsidiary of Microsoft Corporation. The Bluetooth® word mark and logos are registered trademarks owned by Bluetooth SIG, Inc. All other brand and product names are trademarks or registered trademarks of their respective owners.

Images shown in this document may vary slightly from actual products at time of shipping. Information in this manual is subject to change without notice.

Table of Contents

About This Manual

Related Information	1
Conventions.....	1

Chapter 1. Using the DashON Utility

Overview.....	2
Update DashON Utility	17

About This Manual

The DashON Utility User's Manual provides instruction for qualified personnel to follow when setting up a new DashON Utility device.

This document is intended for use by qualified personnel to compliment the training and expertise, not to replace it.

Related Information

Current information and manuals are available for download at the following website:

<http://www.ruggon.com>

Conventions

Bolded or underlined text is used to emphasize the designated information.



A Note is used to provide additional information for the device or settings.



A Caution is used to warn against potential hazards or to caution against unsafe practices.



A Warning is used to identify immediate hazards for property damage, injury or death.

Chapter 1 . Using the DashON Utility

Overview

The DashON resident program is designed to provide near-instant access to your device’s settings and configuration within a single, easy to use interface.

The following information illustrates and describes the various settings available for configuration through the DashON menus.

Important: Do not terminate or remove the DashON program manually or the ambient light sensor and the function buttons will be malfunction.



For RF settings (Airplane mode, Bluetooth, Wi-Fi, Mobile Broadband), please enable and disable from DashON consistently.



Available functions are dependent on tablet model and operating system.



Figure 1. DashON Overview

Function	Description
EXIT	Minimize DashON and return to the desktop.
Button Lock	Lock or unlock all the physical buttons except Power button.
Screen Auto Rotate	Disable or enable screen auto rotate function.
Airplane	Turn on or off the airplane mode.
Battery	Shows the battery level or charging status.
Brightness	Adjust brightness level and enable or disable auto brightness function.
Volume Control	Adjust volume level and enable or disable mute function.
GNSS	Disable or enable GNSS function.

Function	Description
Wi-Fi	Disable or enable Wi-Fi function.
Bluetooth	Disable or enable Bluetooth function.
Mobile Broadband	Disable or enable mobile broadband function.
Touch Screen Lock	Lock or unlock the touch screen.
ECO Mode	Disable or enable ECO mode to save battery life when using the device.
Power Plan	Manage how your tablet uses power.
Info Viewer	View system specifications. The menu is for display only.
Display Switch	Choose a display mode when connect to another output device.
Pass-through Switch	Switch the usage of internal antenna or external antenna on vehicle docking
Button Setting	Pre-defined functions settings. Supports function button customizing.

Button Lock



PM-522 has a Lock button for this function, too. Short press the Lock button to lock or unlock buttons (except Power and Lock buttons); long press the Lock button to lock or unlock touch screen.

The Button Lock function disables or enables the use of the physical buttons except Power button. Tap to enable or disable the function.



Figure 2. Button Lock

Screen Auto Rotate

The Screen Auto Rotate function disables or enables the auto screen rotation when the device is being rotated. Tap to enable or disable the function.



Figure 3. Screen Auto Rotate

Airplane Mode

The Airplane function disables or enables Airplane Mode. While in Airplane Mode, bluetooth, Wi-Fi and mobile broadband will be disabled and GNSS will keep at original on/off status. Tap to enable or disable the function.



Figure 4. Airplane Mode

Battery

Shows the battery level or charging status. The icon depends on your tablet.



Figure 5. Battery

Brightness

The Brightness function disables or enables the auto brightness function. Tap to enable or disable the function. The slide bar or the icons allow for manual adjustment of the brightness setting.



Figure 6. Brightness

Volume Control

The Volume Control function disables or enables the mute function. Tap to enable or disable the function. The slide bar or the icons allow for manual adjustment of the volume level.



Figure 7. Volume Control

GNSS

The GNSS function disables or enables the Global Navigation Satellite System module. Tap to enable or disable the function.



Figure 8. GNSS

Wi-Fi

The Wi-Fi function disables or enables Wi-Fi module. Tap to enable or disable the function.



Figure 9. Wi-Fi

Bluetooth

The Bluetooth function disables or enables bluetooth module. Tap to enable or disable the function.



Figure 10. Bluetooth

Mobile Broadband



The function is only available when WWAN module is installed.

The Mobile Broadband function disables or enables mobile broadband module. Tap to enable or disable the function.



Figure 11. Mobile Broadband

Touch Screen Lock



For models with digitizer, when locking touch screen, digitizer still work normally.

The Touch Screen Lock function disables the touch functionality on the screen.

Tap to enable the function.



Figure 12. Touch Screen Lock

To resume touch functionality, long press assigned physical button (PA-501/PM-521/PX-501: Fn; PM-522: Lock) until the Touch Screen Unlocked screen displays.



Figure 13. Unlock Touch Screen

ECO Mode



The function is only available for Windows models.

The ECO Mode provides three states: On, Auto, and Off, to help in battery life management.



Figure 14. ECO Mode

Tap **On** to enable the mode whenever the device is turned on.

Tap **Auto** to allow the utility to select periods of inactivity to power down. In Auto mode, presets can be assigned to designate when the device automatically enters ECO mode.



When Auto is selected and ECO mode is on, if power is connected, the system will lift ECO mode.

Tap **Off** to disable the ECO Mode.

Tap **Back** to return to the main menu.

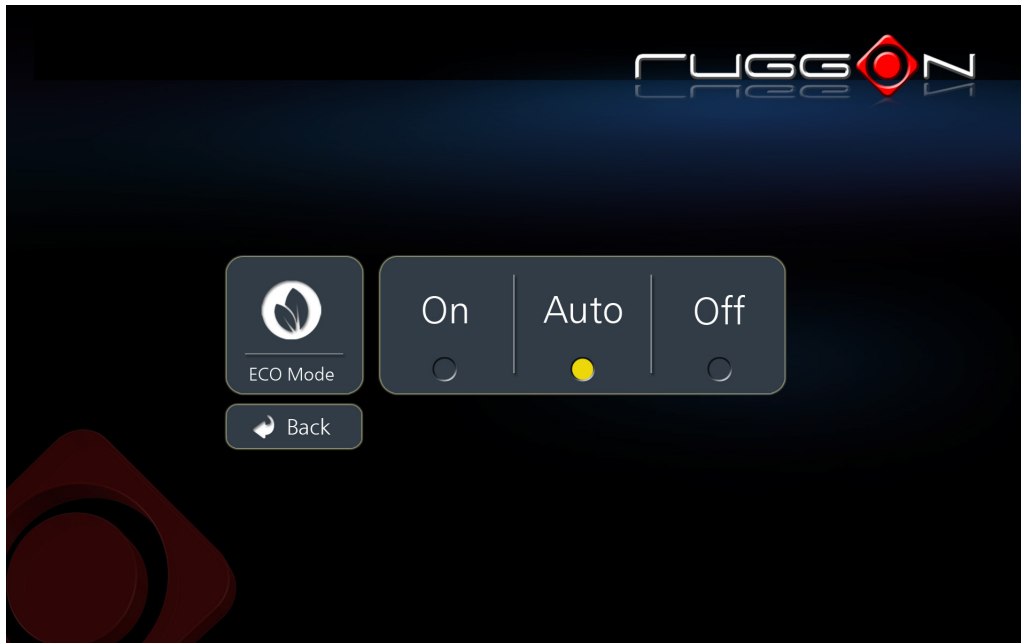


Figure 15. ECO Mode Menu

Power Plan



The function is only available for Windows models.

The Power Plan provides settings to manage how the device uses and conserves power. A power plan can be setup to maximize the device performance, save energy or balance energy conservation with performance.



Figure 16. Power Plan

Modify the On Battery, In Charge, or ECO Mode states to define the power scheme best suited to your needs.

To modify the power plan, tap the drop-down menu of the relevant setting, then tap **Save** to create the new power plan scheme. Alternatively, tap **Cancel** to return to the previous screen without saving.

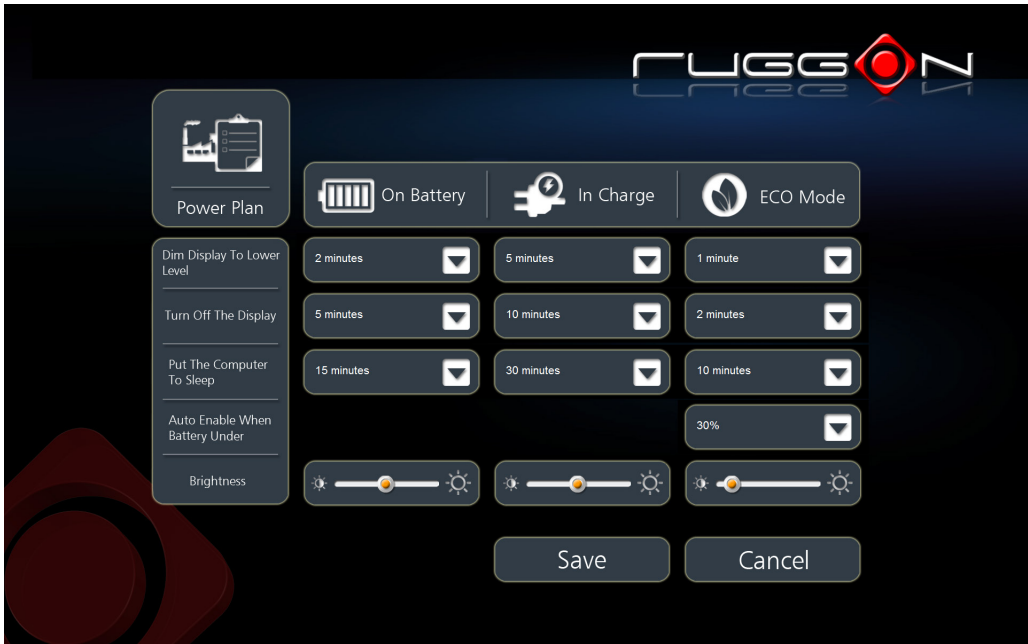


Figure 17. Power Plan Menu



Windows 8 without the Dim Display To Lower Level function.

Info Viewer

The Info Viewer displays the system's hardware specifications.

Tap to display system information. The setting is for display purposes only.



Figure 18. Info Viewer

Display Switch



The function is only available for Windows models.

The Display Switch function supports four types of display options:

- View desktop on main display
- View desktop on main display and show extended display
- Duplicate both displays
- View desktop on extended display.



Figure 19. Display Switch



Figure 20. Display Switch Menu

Pass-through Switch

This function is only available on the models with pass-through connector. This function is only available when tablet is well connected to vehicle docking, see “Bottom View” at user manual. GPS, WWAN and Wi-Fi settings are available once the optional RF antenna is connected.



Figure 21. Pass-through Switch

The external antenna can be selected two from WWAN, Wi-Fi or GPS.



Figure 22. Pass-through Switch Menu



- Ext. 1: Wi-Fi and GPS are exclude.
- Ext. 2: Wi-Fi and WWAN are exclude.
- Ext. 1 Wi-Fi and Ext. 2 Wi-Fi are exclude.

The system may display an error when an incompatible external GPS antenna is detected or setup is not completed after selecting GPS on Ext. 1.

Possible solutions for this issue are as follows:

- Tap OK: The system reverts to the use of the built-in GPS antenna.
- At this time do not tap OK. See a possible solution as follows
 - Remove and re-connect the external antenna. If a connection is established, the error no longer displays.
 - Remove the current external GPS antenna and replace it with a different one. If a connection is established, the error no longer displays. The original GPS antenna may not be compatible or is malfunctioning.



Figure 23. GPS Failed



Display status delay is normal when detecting an external GPS antenna.

Button Setting

The physical function buttons are configured with pre-defined commands. However, the buttons can be configured to open any number of executable commands. In combination with the Fn key, the function buttons can trigger more commands.



Fn key depends on your tablet.



Figure 24. Button Setting

Select the function key to define and tap the drop-down menu to choose from a pre-defined list of commands.

Alternatively, tap **Other** to select a specific executable file to attach to the function key.

Additional shortcuts can be created by enabling the Fn + button. This allows the creation of a second set of short cuts available by pressing Fn + Function Button.

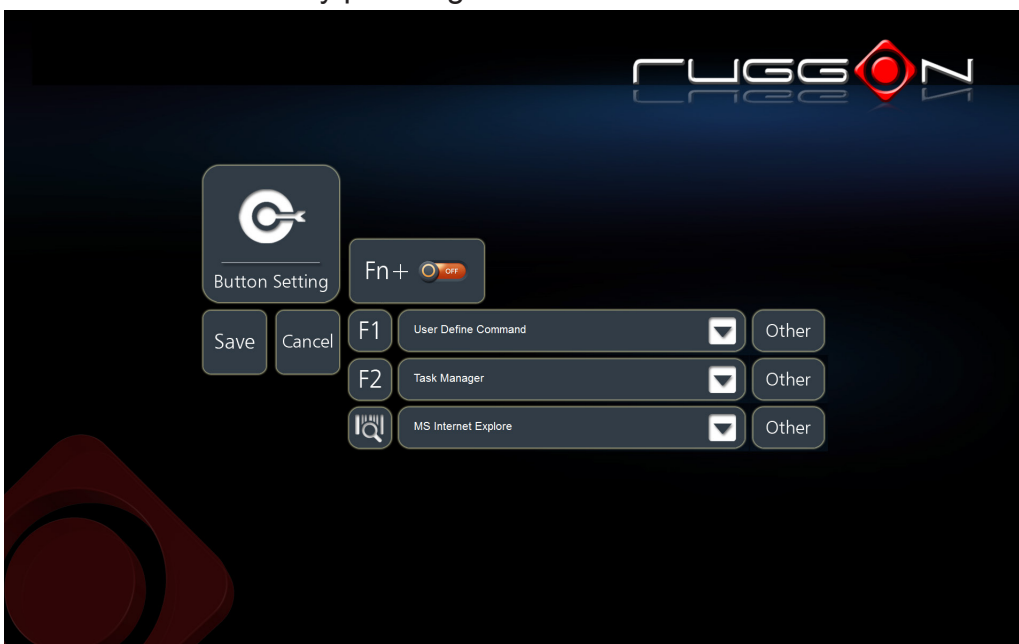


Figure 25. Button Setting Menu

Update DashON Utility

1. Remove the DashON utility from your tablet.
2. Tablet online: Download the latest version of DashON utility from RuggON.
or
Tablet doesn't online: Download the latest version of DashON utility from RuggON and use USB device to install.
3. Use Windows explorer or the Windows Run command to execute the setup program.
4. Once the DashON Setup Wizard screen displays, tap **Next** to proceed with the installation.

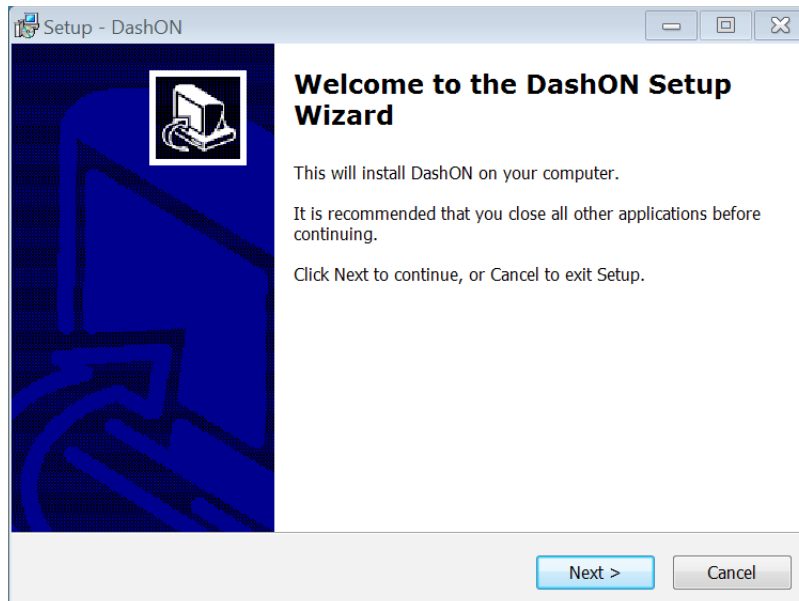


Figure 26. DashON Installation 1 of 4

5. Tap **Install** to continue or **Cancel** to stop the installation.

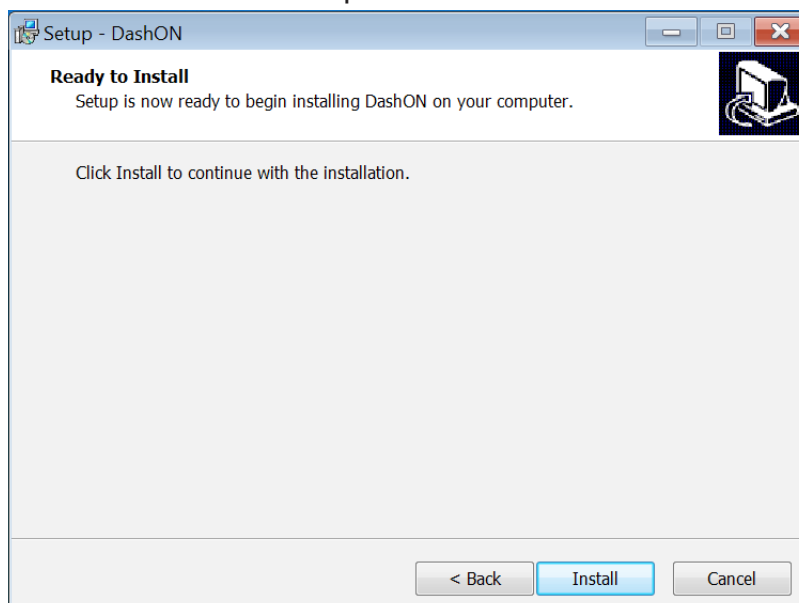


Figure 27. DashON Setup Wizard 2 of 4

The DashON Setup continues and a status screen displays.

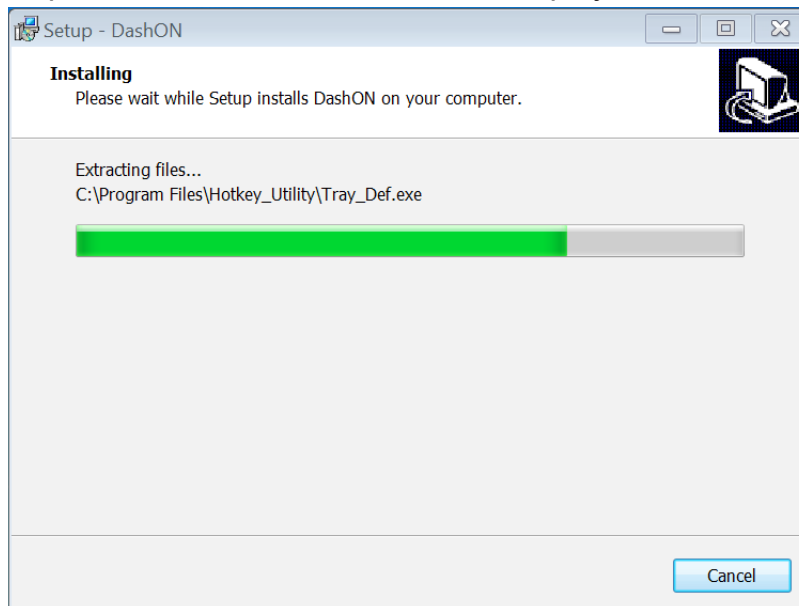


Figure 28. DashON Setup Wizard 3 of 4

6. Once the installation of the package is finished a DashON Utility screen displays. Tap **Finish** to conclude the process and exit the DashON Setup Wizard.

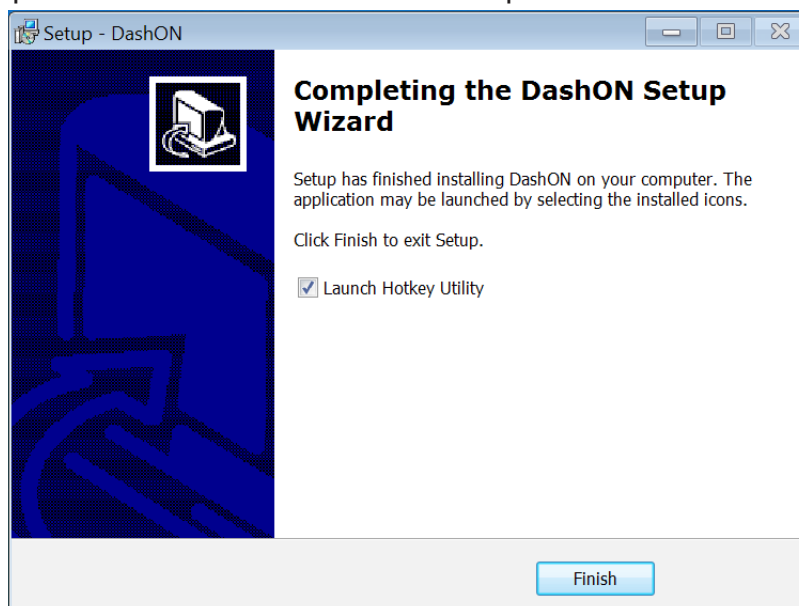


Figure 29. DashON Setup Wizard 4 of 4

