

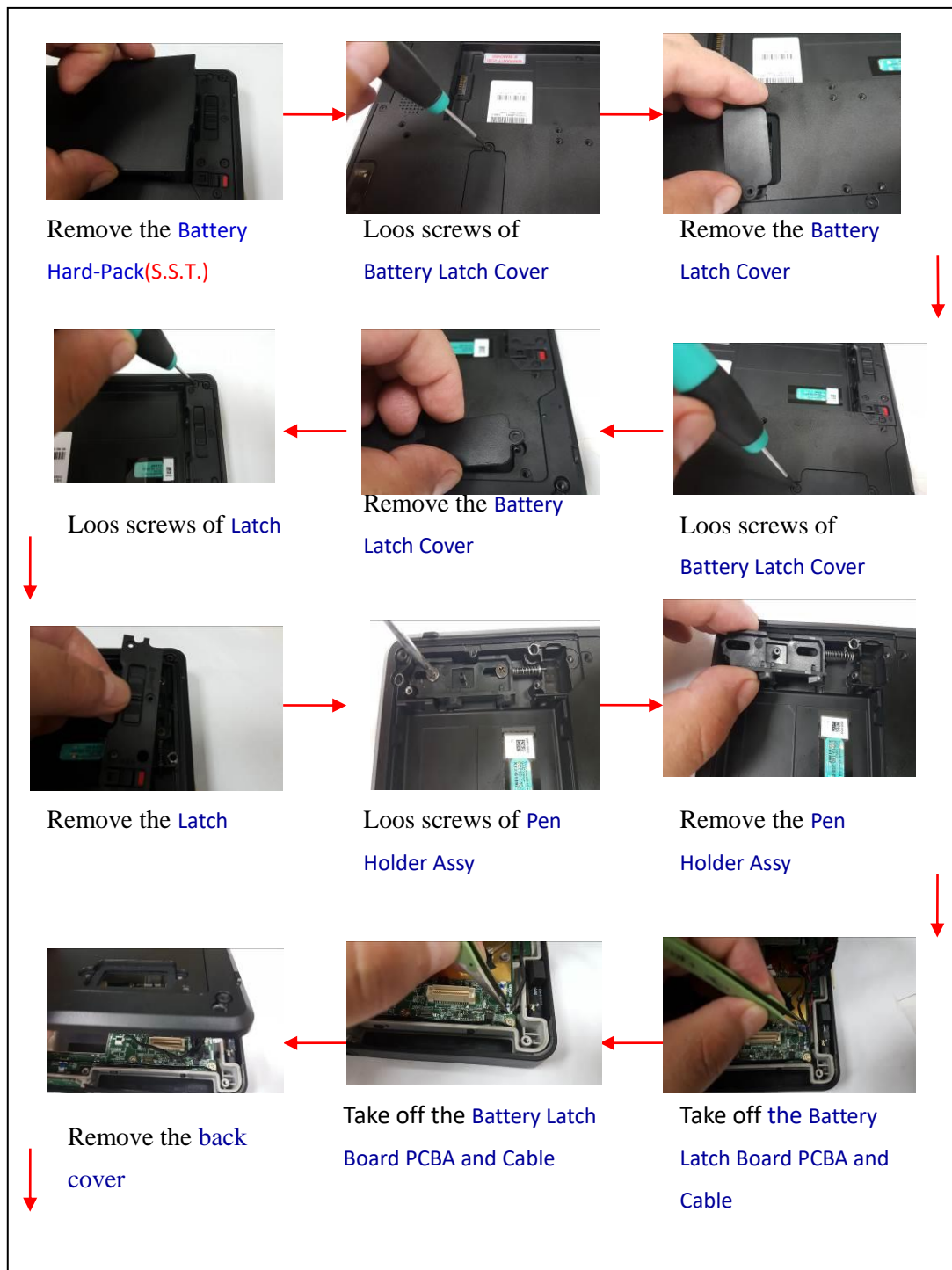


# **Luna3 Disassemble SOP**

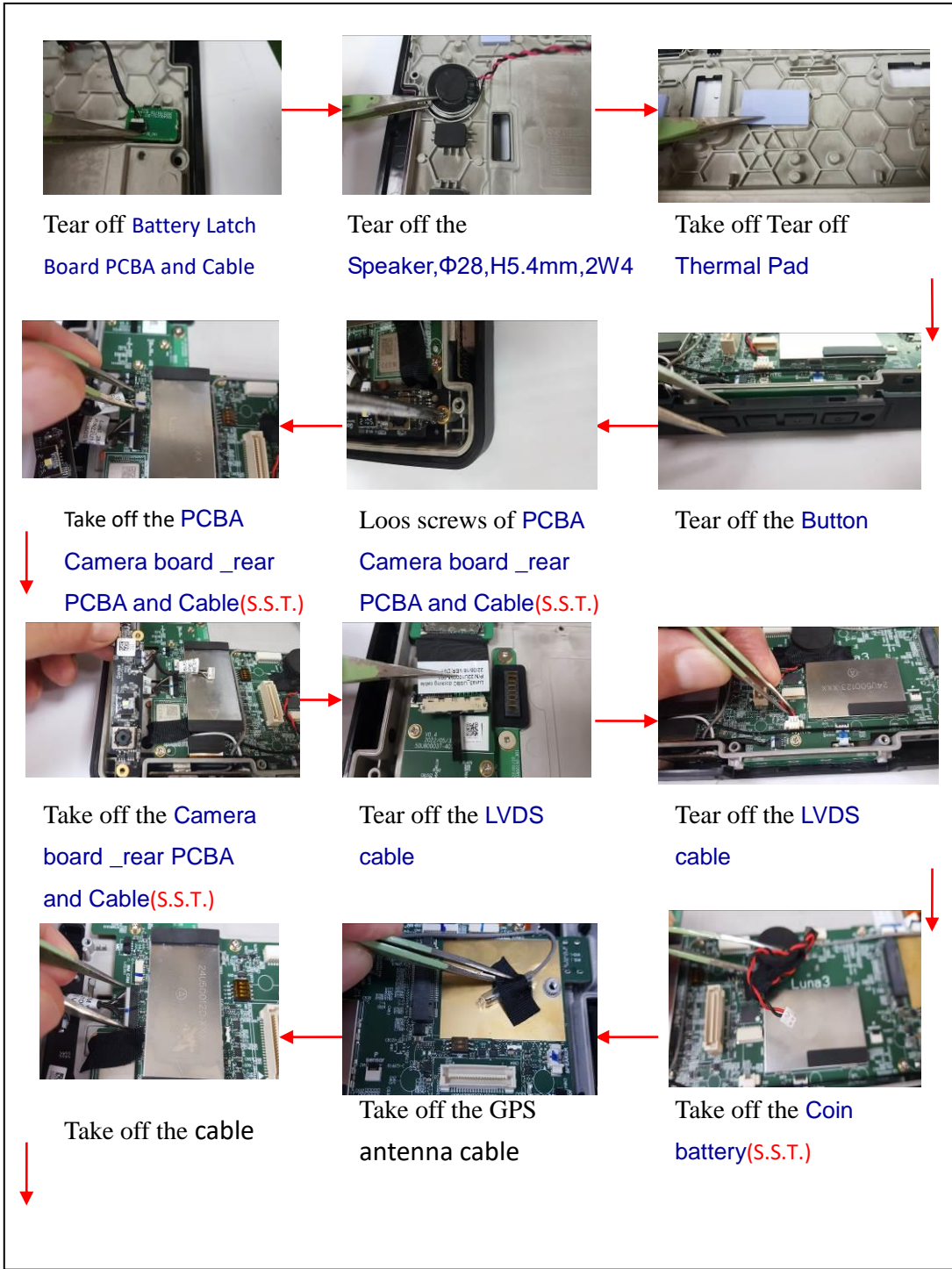
Prepared by : Edison Yang

Issued on : 2023/6/11

**Luna3 Dissemble Process**



Remark : 1: S.S.T means selective treatment from Annex VII of the WEEE Directive



Remark: S.S.T. means selective treatment from Annex VII of the WEEE Directive



Take off the cable



Take off the cable



Tear off the PCBA  
Right MIC BOARD  
and Wire



Loos screws of Camera  
board \_front PCBA and  
Wire(S.S.T.)



Tear off the Camera  
board \_front PCBA  
and Wire(S.S.T.)



Take off the PCBA Right  
MIC BOARD and Wire



Take off the Camera  
board \_front PCBA  
and Wire(S.S.T.)



Separate the PCBA  
USBC Docking  
Board(S.S.T.)



Take off the PCBA  
USBC Docking  
Board(S.S.T.)



Remove the  
antenna cable



Tear off the PCBA  
Dual SIM/Sensors  
Board(S.S.T.)



Separate the PCBA Dual  
SIM/Sensors Board(S.S.T.)



Tear off the cable



Separate the PCBA  
Mainboard(S.S.T.) by loosening  
screws



Remove the PCBA  
Mainboard(S.S.T.)



Remove the PCBA  
Battery charge  
board(S.S.T.)



Separate the PCBA  
Battery charge board  
(S.S.T.) by loosening



Remove the PCBA  
button board(S.S.T.)



Tear off PCBA  
Antenna board and  
Wire(S.S.T.)



Remove the GPS  
modules(S.S.T.)



Tear off the Metal  
sheets



Completed  
disassembly



Remove FRONT  
CASE(S.S.T.)



Tear off the FRONT  
CASE(S.S.T.)

## Accessories



**The external power adapter enclosure separated/removed related method. (S.S.T.)**



Bracket of adaptor:



Case of adaptor:



Remark: S.S.T. means the selective treatment from Annex VII of the WEEE Directive



(S.S.T.)



(S.S.T.)



(S.S.T.)



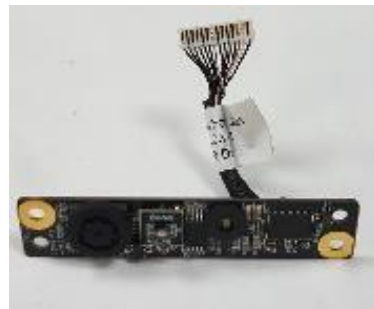
(S.S.T.)



(S.S.T.)



(S.S.T.)



(S.S.T.)



(S.S.T.)



(S.S.T.)



(S.S.T.)



(S.S.T.)



(S.S.T.)



(S.S.T.)



(S.S.T.)



(S.S.T.)

## Disassembly Tools

Tools Used for  
Manual  
Disassembly

Philips Screwdriver  
Knife  
Tweezers  
hexalobular socket  
screwdriver  
Flathead  
screwdriver

