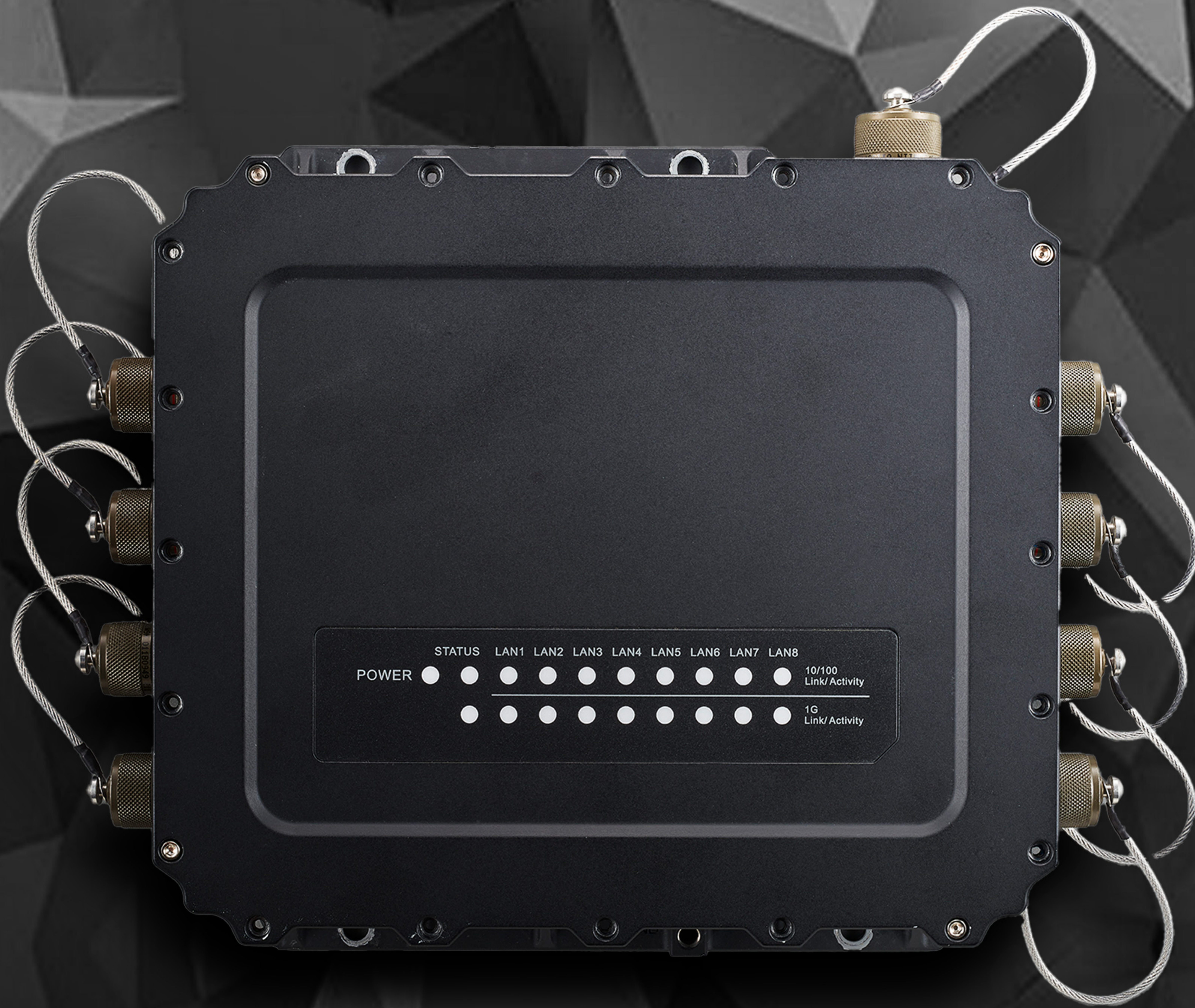


# XRGE8 - Extreme

## Rugged Giga Ethernet Switch



## Feature

- Withstand harsh environment and tested by MIL-STD-810H
- EMC compliant with MIL-STD-461G
- Power design compliant with 1275E
- Modular design allows for customization based on mission requirements.
- Designed for long service life with extended product lifecycles.
- Low latency and high throughput for real-time data transmission.



# Specification

## Hardware

---

- Main chip: VSC7422XJG-04
- Ethernet port: 8\*10/100/1000 Mbps LAN ports
- LED indicator: 19\* LED
- IEEE Network Protocols:
  - IEEE802.3 10BASE-T Ethernet
  - IEEE802.3u 100BASE-TX Fast Ethernet
  - IEEE802.3ab 1000BASE-T Gigabit Ethernet
  - IEEE802.3az EEE

## Dimension

---

- 270 X 230 X 50mm (W X H X D)
- 2KG

## Environmental (MIL-STD-810H Specs)

---

- Operating temp : -40 to +71°C(Method 502.7/501.7)
- Storage temp : -46 to +81°C (Method 502.7/ 501.7)
- Humidity : 5% to 95% non-condensing (Method 507.6 Proc II)
- Shock: 40G operating, 11ms (Method 516.8)
- Shock: 75G Non-operating 6ms (Method 516.8)
- Vibration : Method 514.8 C-2/ C-4/ C-6, Method 514.8E-1
- Operating Altitude : 20,000 ft (Method 500.6 Proc II)
- Storage Altitude : 40,000 ft (Method 500.6 Proc I)
- Salt Fog : 5% 96 hrs (Method 509.8)
- Dustproof : IEC 60529 IP6X
- Waterproof : IEC 60529 IPX8

## Power

---

- 16 ~ 40VDC (28VDC Nominal)
- Power Consumption : Under 15W
- MIL-STD-1275E

## EMC

---

- MIL-STD-461G

## Others

---

- Air Exchange : Water-Proof Air exchange hole with PTFE
- Grounding : M6 screw hole without painting